

LED Light Source Module

BIM-6215 Series

The compact BIM-6215 series LED module offers multiple wavelength options, including 255nm, 275nm, 310nm, 365nm, 380nm, 400nm, 415nm, and 430nm, with custom wavelengths available upon request. It can be powered by the optional Tunable constant current power supply BIM-5036, which ensures spectral output stability while allowing intensity adjustment.

Additionally, a variety of accessories are available, such as a four-channel cuvette holder and a diffuse reflection micro fiber optic holder, enabling easy setup of LED-based fluorescence measurements.



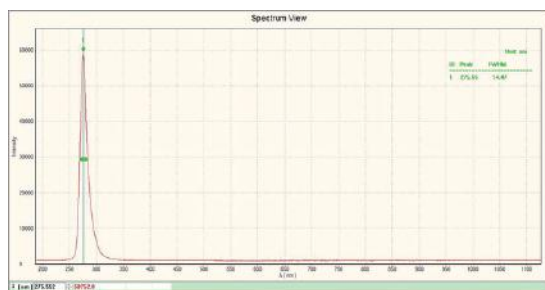
Features

- High-quality chips: ensuring stable performance with no drift or fluctuation even during prolonged operation.
- Lifespan of LED light source: ~100,000 hours
- Cold light emission, low heat dissipation, compact size, and portability.

Applications

- High-resolution optics
- Fluorescence detection
- Medical applications
- Photocatalytic reactions
- UV adhesive curing
- Specialized lighting

Typical Spectrum



275nm spectrum



310nm spectrum

What's included

#	Part Description	Model	Qty.
1	LED Light Source Module	BIM-6215-xxx	1
2	4mm banana plug connection wire, 60cm, black color	BC-105083	1
3	4mm banana plug connection wire, 60cm, red color	BC-105084	1

Specifications

Model	Wavelength (nm)	Max Current (mA)	Power (W)	Radiant Power (mW)	Size (mm)
BIM-6215-255	255	100	0.6	10-15	Φ43×46
BIM-6215-275	275	30	0.2	3-4	
BIM-6215-310	310	40	0.3	3-4	
BIM-6215-365	365	700	3	200-600	
BIM-6215-380	380	700	3	200-600	
BIM-6215-400	400	700	3	200-600	
BIM-6215-415	415	700	3	200-600	
BIM-6215-430	430	700	3	200-600	

Note: Other wavelengths can be customized.

Optional

BEM-5036 Dual-Range Tunable Constant Current Source (50mA/500mA)

Dimensions (mm)

